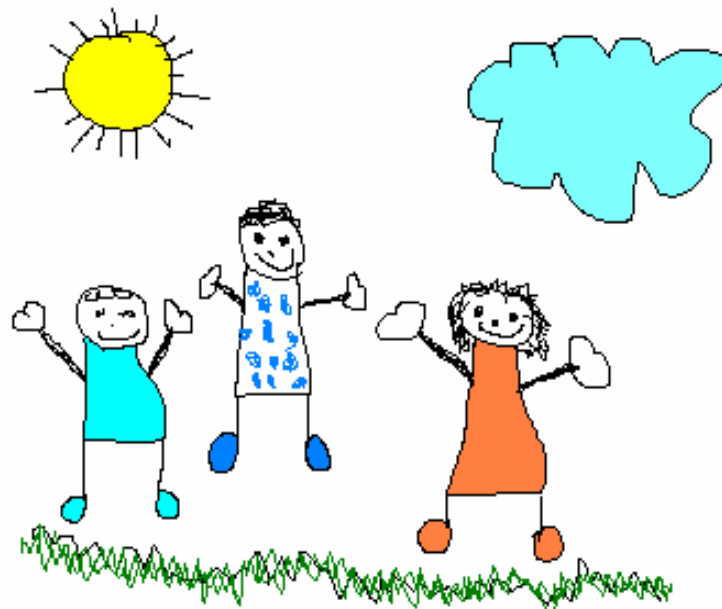




City of Rauma
Social Services

MUNICIPAL DAY-CARE



DAY-CARE

City of Rauma, Social Services
PO BOX 59, 26101 Rauma
E-mail: etunimi.sukunimi@rauma.fi

APPLYING FOR DAY-CARE

A day-care place is applied for by completing an application form and addressing it to the day-care centre or the family day-care supervisor of the first desired area. The forms are available from day-care centres, social services, Kalliokatu 1, and from the service point Pyyrmani at Kanalinranta 3.

It is possible to apply for full- or part-day places in day care throughout the year. The council is obliged to arrange a care place within two weeks from receipt of the application when required for a parent's employment or training. In other cases, the application should be submitted four months before day care is required.

There is also a so-called centralised application period when day-care places become available in the new operating period (01.08.–31.07.). These will be advertised in the local newspapers.

ADMINISTRATION

The City of Rauma is divided into three day-care areas: southern, eastern and northern, and each of these have their own area manager who is responsible for the day-care centres in the specified area and for his or her own special area of responsibility in the overall day-care sector.

Overall responsibility for day-care
Department Head Outi Sinkkilä-Salmi, tel. 834 4523
Social Services, Kalliokatu 1

Ulla Johansson is the secretary to the head of department and also maintains the substitute day-care register
834 3381

DAY-CARE OFFICE

Kalliokatu 1, 2nd floor, fax 834 3312

The following secretaries are responsible for calculation, invoicing and any other issues related to the day-care fees, as well as the service voucher:

Arja Jalonen	834 3379
Ulla Johansson	834 3381
Katja Takalo	834 3382



MUNICIPAL DAY-CARE SERVICES:

DAY-CARE CENTRES

SOUTHERN AREA

Area manager Satu Mäki Lensu day-care centre 834 4576
Special area of responsibility: play activities

Kourujärvi day-care centre	Taninpolku 2	834 4587	kourujarven.paivakoti@rauma.fi
Lensu day-care centre	Taimipolku 3	834 4576	lensun.paivakoti@rauma.fi
Nummi day-care centre	Meijerikatu 6	834 4572	nummen.paivakoti@rauma.fi
Onnela day-care centre	Rajasuontie 2	823 5353	onnelan.paivakoti@rauma.fi
Paroalho day-care centre	Päiväsenkatu 14	834 4585	paronahon.paivakoti@rauma.fi
Sampaanal day-care centre	Sampaanalantie 38	834 4577	sampaanal.paivakoti@rauma.fi

EASTERN AREA

Area manager Eeva Koskinen Lajo day-care centre 834 4584
Special area of responsibility: family day-care

Helkkilä day-care centre	Hakatie	823 0337	helkkilan.paivakoti@rauma.fi
Kahmo day-care centre	Uotilan vanhatie 2	823 0928	kahmon.paivakoti@rauma.fi
Lajo day-care centre	Vilkuntie 46	834 4584	lajon.paivakoti@rauma.fi

NORTHERN AREA

Area manager Marja-Leena Kempas Pyynpää day-care centre 834 4586
Special area of responsibility: pre-school education

Ota day-care centre	Pursikatu 4	834 4574	otan.paivakoti@rauma.fi
Pyynpää day-care centre	Pyyvahe 3	834 4586	pyynpaan.paivakoti@rauma.fi
Syvärauma day-care centre	Ainonkatu 69	834 4581	syvarauman.paivakoti@rauma.fi
Taikatakki	Seminaarinkatu 1	834 4570	taikatakki@rauma.fi
Wänni day-care centre	Nortamonkatu 8	834 4571	wannin.paivakoti@rauma.fi

FAMILY DAY CARE

SOUTHERN AND EASTERN AREA

Family day-care supervisor Lajo day-care centre 834 4578
Merja Mustonen Vilkuntie 46

TOWN CENTRE AREA

Family day-care supervisor Nummi day-care centre 834 4572
Marianne Öystilä Meijerikatu 6

NORTHERN AREA

Family day-care supervisor Pyynpää day-care centre 834 4580
Jaana Eriksson-Kuromaa Pyyvahe 3

GROUP FAMILY DAY-CARE CENTRES

Mustikka Mustikkapolku 4 534 5152
Family day-care supervisor Merja Mustonen 834 4578

Pikku Myy Koulutie 3 823 0730
Family day-care supervisor Merja Mustonen 834 4578

Sateenkaari Luostarinkatu 3 as 3 B 834 4560
Nuutti Siikapolku 3 A 534 1941
Family day-care supervisor Jaana Eriksson-Kuromaa 834 4580



SHIFT WORK

Shift day-care centre Rinkeli open 24 hours a day
Heli Vilèn, head of day-care centre Teollisuuskatu 9 B 834 4596

Nummi day-care centre open Mon-Fri from 5.30am to 10.30pm and on Saturdays as required
Marianne Öystilä, head of day-care centre Meijerikatu 6 834 4572

SPECIAL DAY-CARE

As far as possible, children requiring special care and education are cared for in the usual groups in day-care centres/ family day care. There are also integrated special groups in the Lajo, Lensu, Nummi, Ota and Pyynpää day-care centres.

Mobile special kindergarten teachers Nummi day-care centre, Meijerikatu 6
Kirsti Jussila 834 4527, 533 5500
Saija Tanhuanpää 834 4589, 533 5501

Temporary childcare help is provided by the Rauma family service centre of the Mannerheim League for Child Welfare

Punaposki Tarvonsaarenpuisto 4 822 8997

The home service for families with children is operating 2005, mainly for looking after a sick child.
Deaconal Institution, homecare service Savilankatu 10 822 6450

PLAY ACTIVITIES

Play activities are provided by open day-care centre Sinilintu, the round-the-year playground in Kanalinpuisto Park, summer playgrounds in June, and the traffic park in June-August.

The purpose of the family activities in the open day-care centre is organising joint activities involving both children and adults.

Each family takes part in the activities once a week. The fee is €35.90/ €18.00/ €9.00 per term, based on the number of visits.

Open day-care centre Sinilintu Meijerikatu 4 834 4588

Head of day-care centre Kirsi-Marja Hyppölä

In addition, in Meriristi there is an open day-care centre group, Merilintu, which meets every Wednesday morning.

Schoolchildren's afternoon care is a club-type activity in co-operation with various bodies, co-ordinated by the council's youth work department. Enquiries to Rauma public office for physical education and youth (liikunta- ja nuorisovirasto), Valtakatu 2, tel. 834 3271.

The care of children needing shift care is arranged at Rinkeli, tel. 834 4596.

PRIVATE DAY-CARE SERVICES

English Kindergarten Karjalankatu 16 822 6910 english.kindergarten@surfeu.fi

Musikatti Day-care Centre Osmonkatu 4 822 5838 musikatti@luukku.com

Rauma-Repola kindergarten Talolantie 9 822 6555 rrtarha@kolumbus.fi

The family day-care supervisors provide information about **private family childminders**.

SERVICE VOUCHER PAID BY THE CITY OF RAUMA

The service voucher is paid to a private day-care provider approved by the council, provided that

- the child has been granted private day-care allowance by KELA
- the child is in day care due to parents' working, studies or training
- the child actually lives in Rauma

The service voucher is applied for with a separate application form. Further information about the service voucher is available from the day-care office.

There is a separate brochure about the private day-care service voucher.



CHILD CARE SUPPORT

CHILD HOME CARE ALLOWANCE

Child home care allowance is paid for children under school age who are not cared for in day care arranged by the council. A further requirement is that there is a child under 3 years of age in the family. The allowance can be paid immediately from the termination of the period of parental allowance, and it will be paid until the youngest child turns 3 years of age, goes to municipal day care or the family opts for a private child-care allowance. The care money of the child-care allowance paid for one 3-year-old child is €294.28 per month. Further information from the local office of KELA, Nortamonkatu 24, tel. 020 435 9300.

PARTIAL CHILD-CARE ALLOWANCE

KELA pays partial child-care allowance to the parent of a child under 3 years of age who is in employment or service and whose average working time is a maximum of 30 hours due to childcare. The allowance is €63.07 per month.

PRIVATE CHILD-CARE ALLOWANCE

It is possible to receive a statutory private child-care allowance for private care, paid by KELA, which is applied for at the local office of KELA. Private child-care allowance consists of care money at €137.33 per month and the care supplement based on income, €134.55 per month. The child-care allowance and care supplement are paid for each child entitled to the allowance.